

Údržba pozemků města
Mariánské Lázně
(mapový podklad)



bolševník velkolepý
(*Heracleum mantegazzianum*)

k.ú. Mariánské Lázně

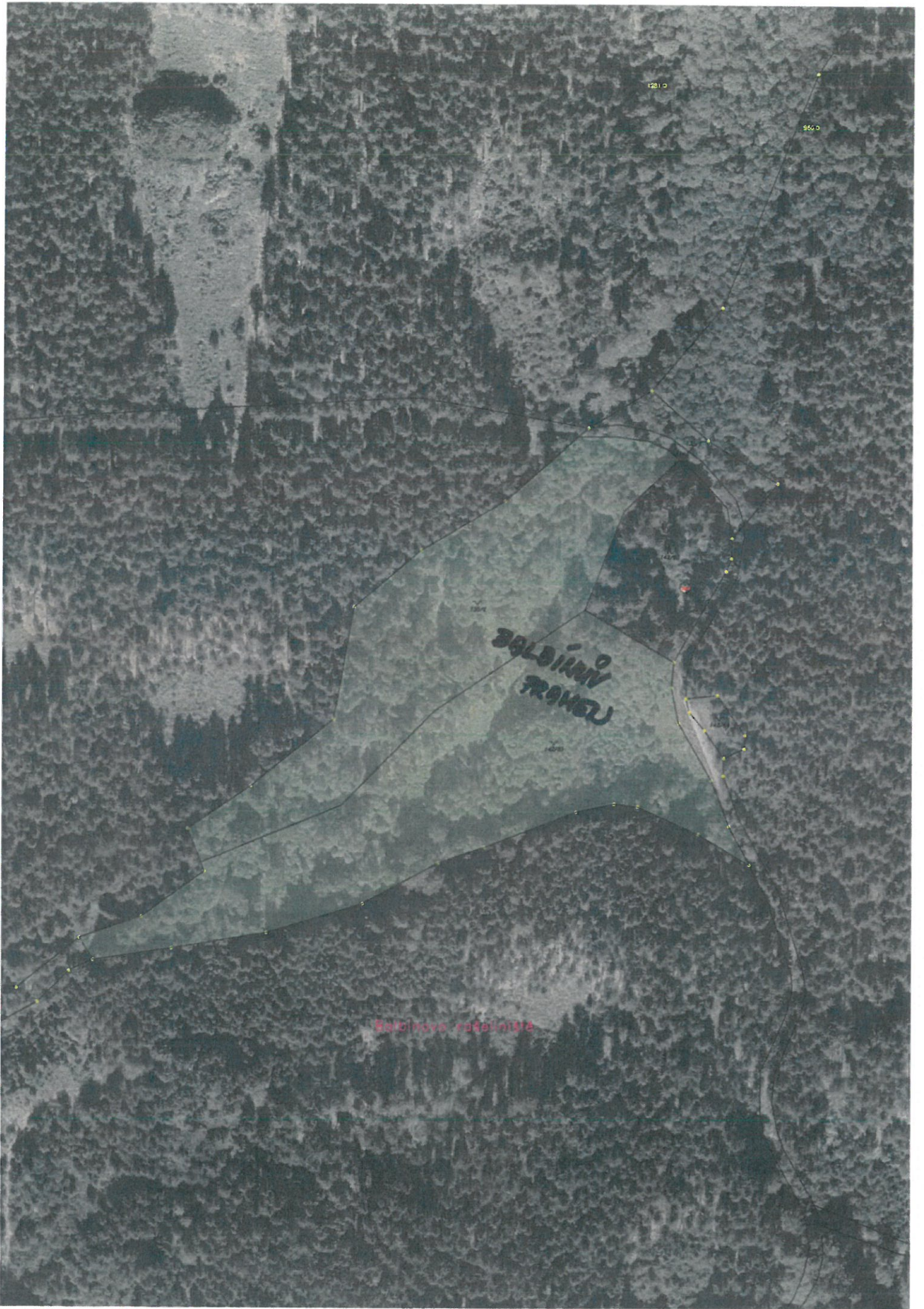
plocha BV

9 288 m²









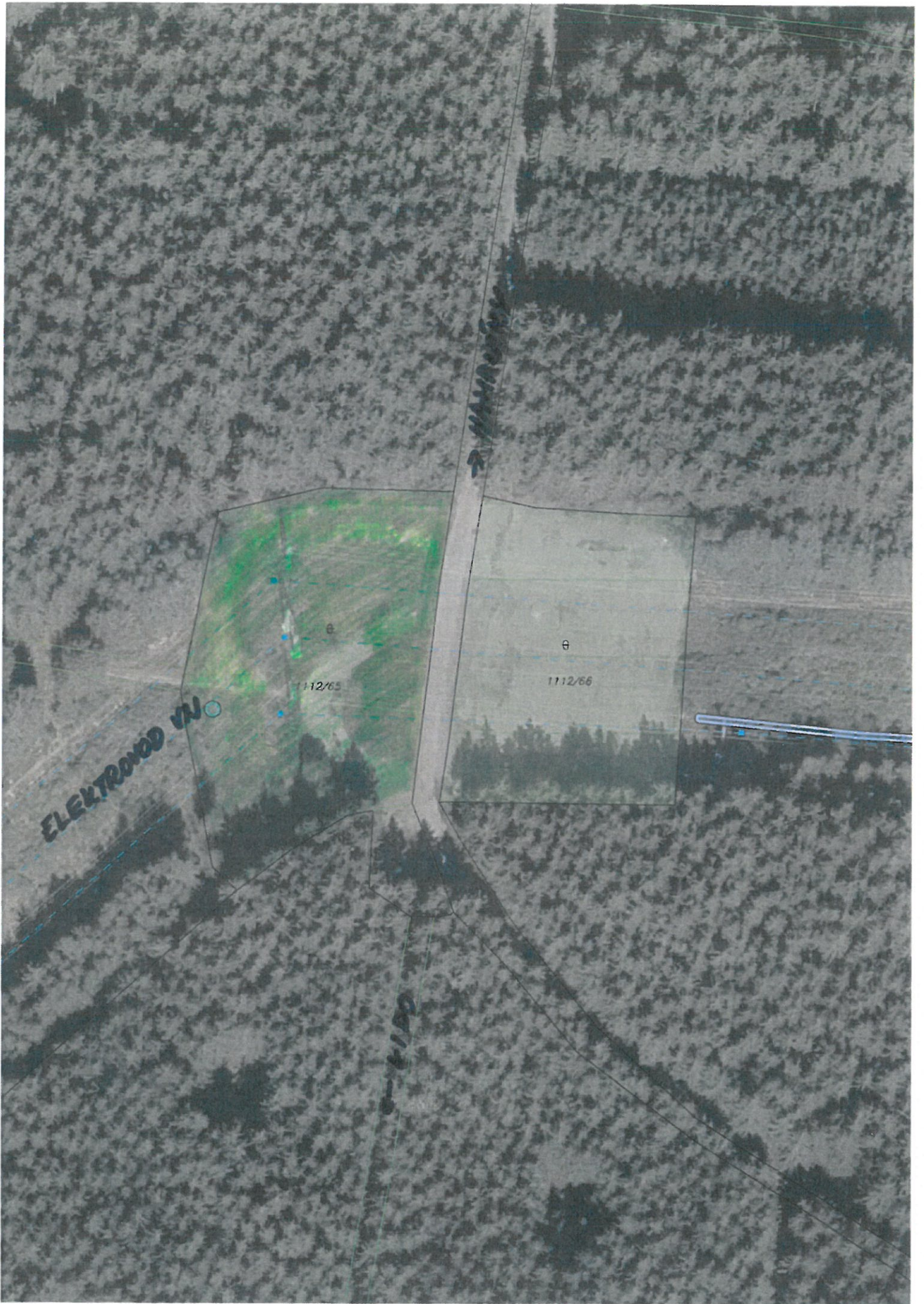
k.ú. Úšovice

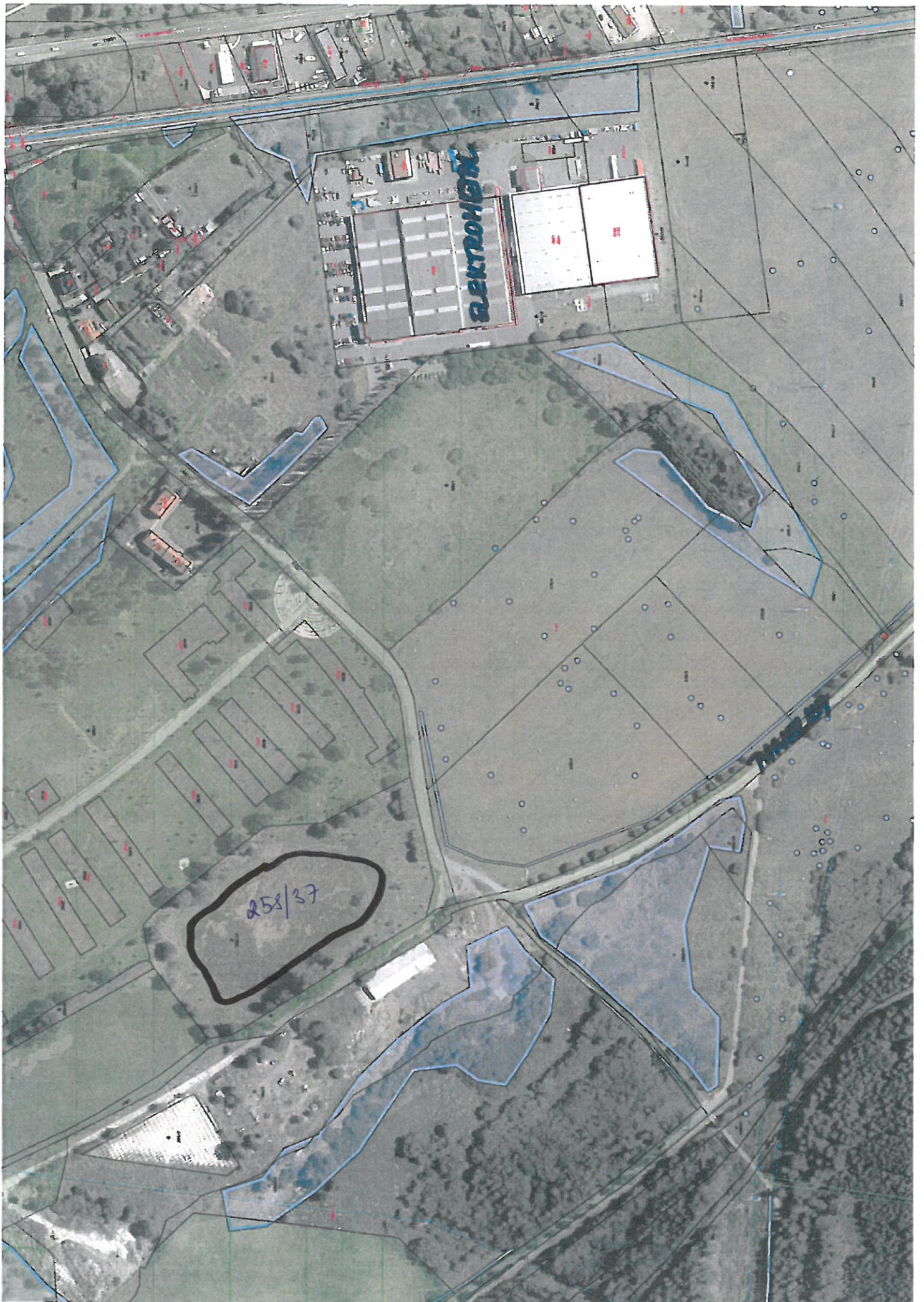
plocha BV

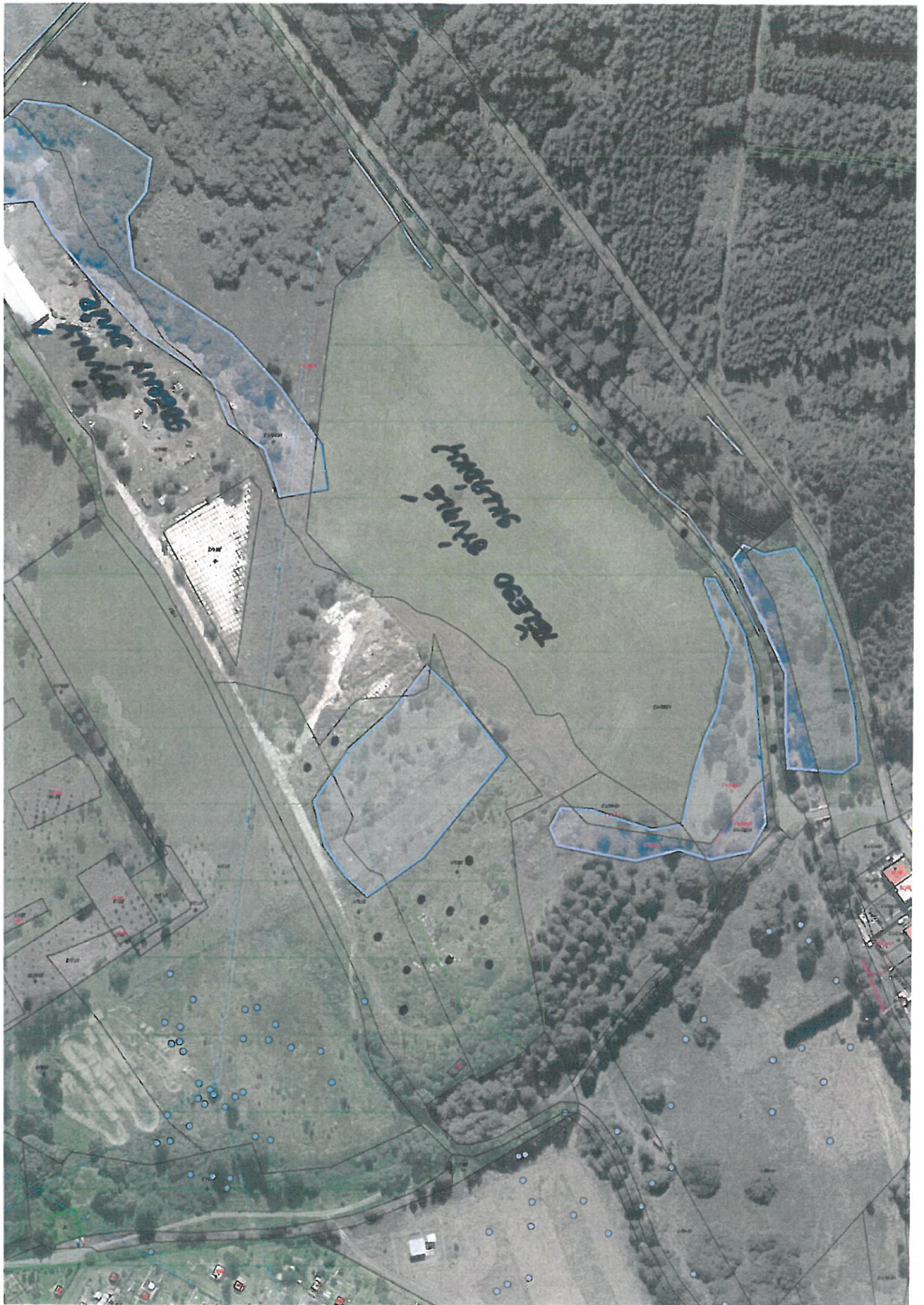
54 248 m²



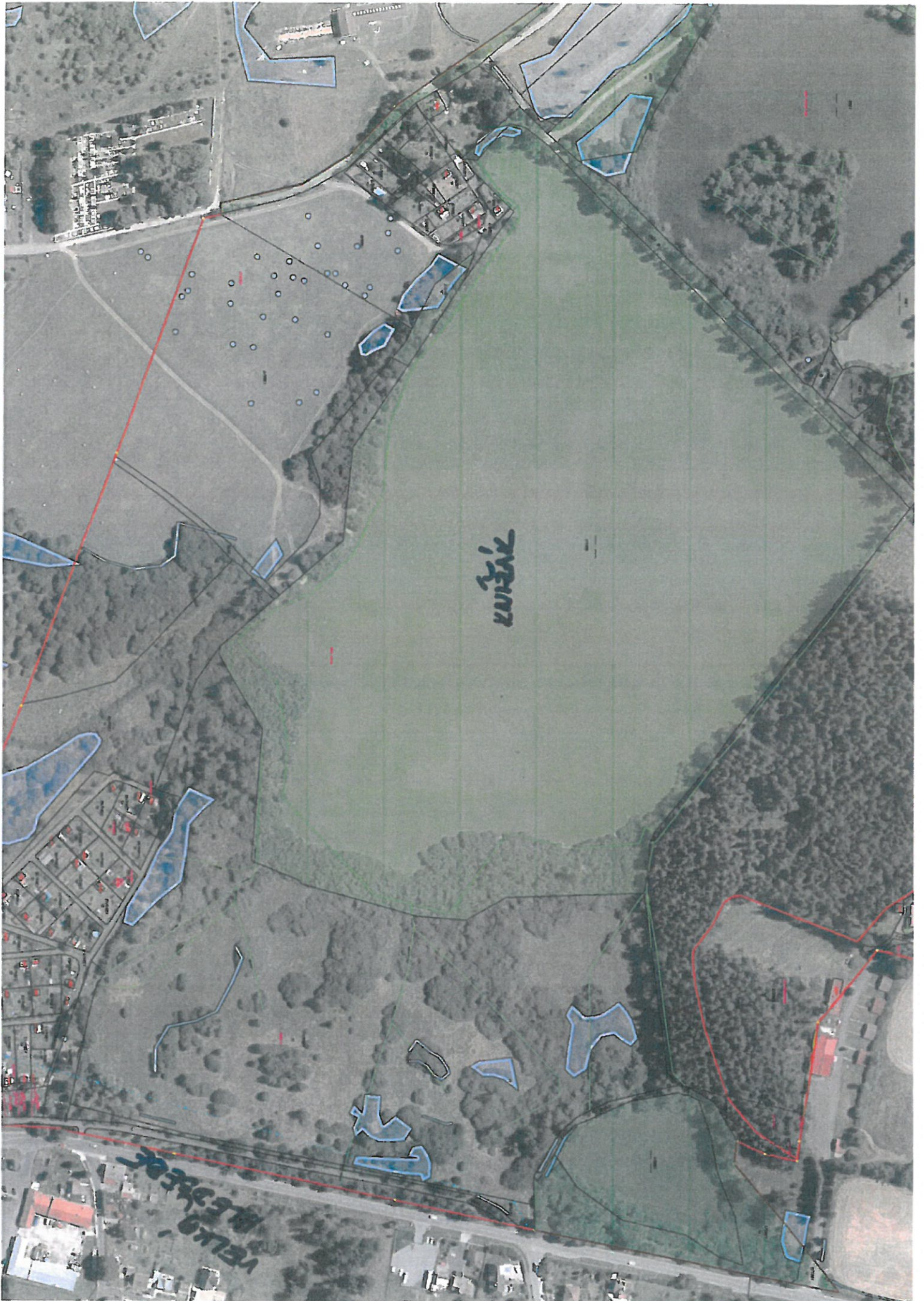










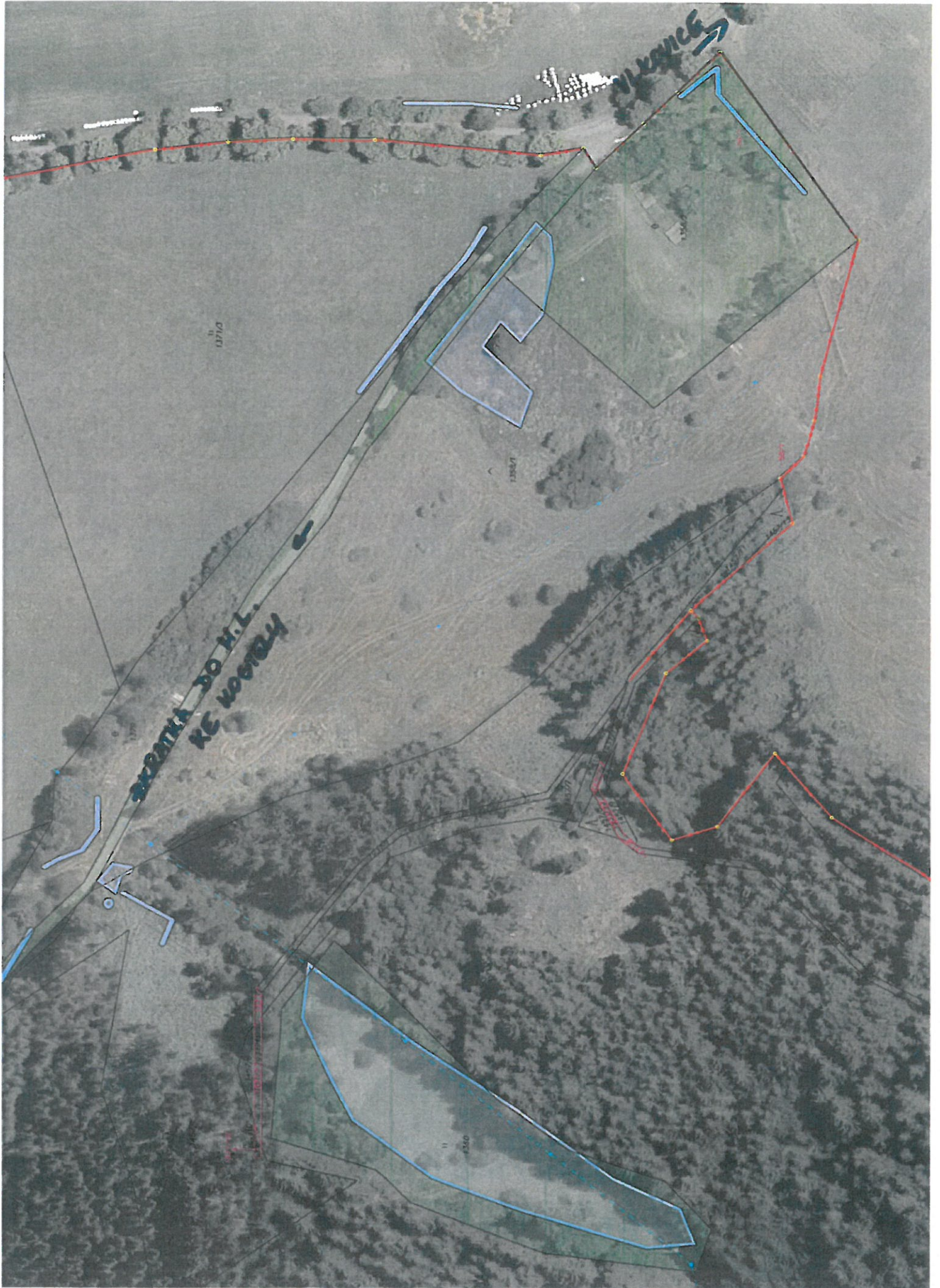


WINDY

WELLS BLVD









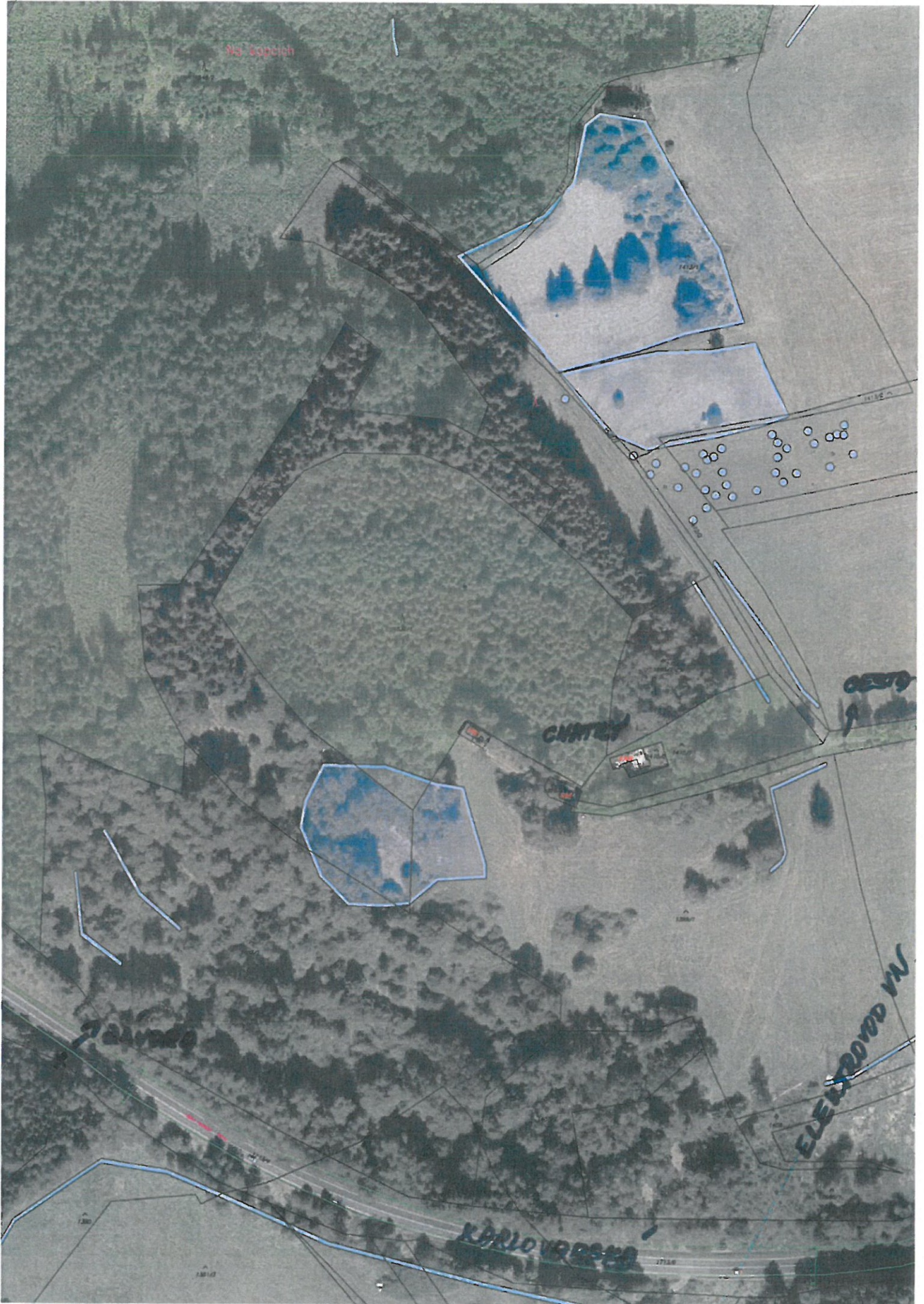








№3. Сопчик



CHITEL

ELEKTRON VV

KARLOVSKO



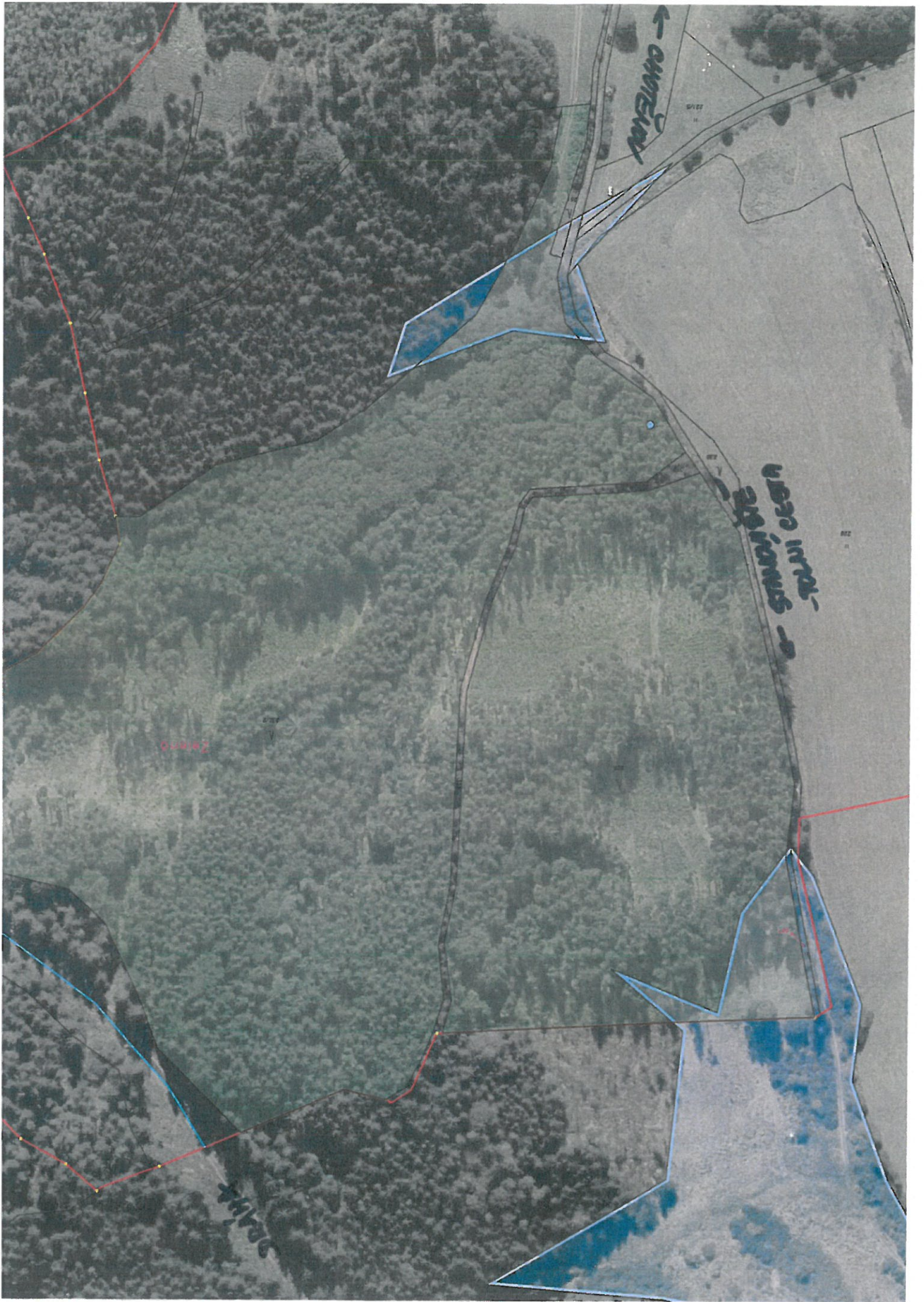
k.ú. Chotěnov u Mariánských Lázní

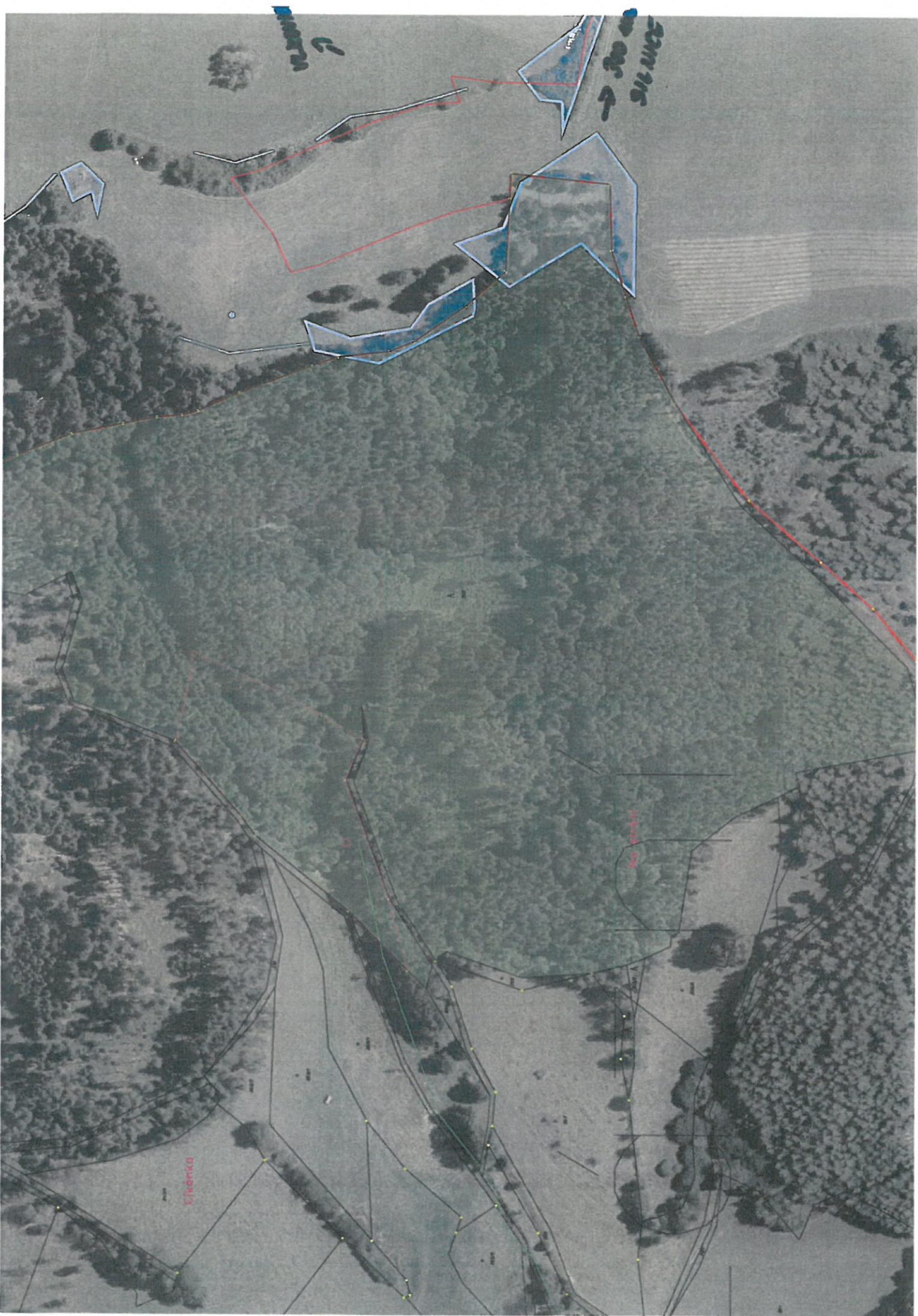
plocha BV

5 540 m²









Handwritten blue text at the top left, possibly a name or location.

Handwritten blue text at the top right, possibly a name or location.

Red text label 'Civanka' in the lower left quadrant.

Red text label 'NO' in the middle right area.



k.ú. Stanoviště u Mariánských Lázní

plocha BV

7 069 m²

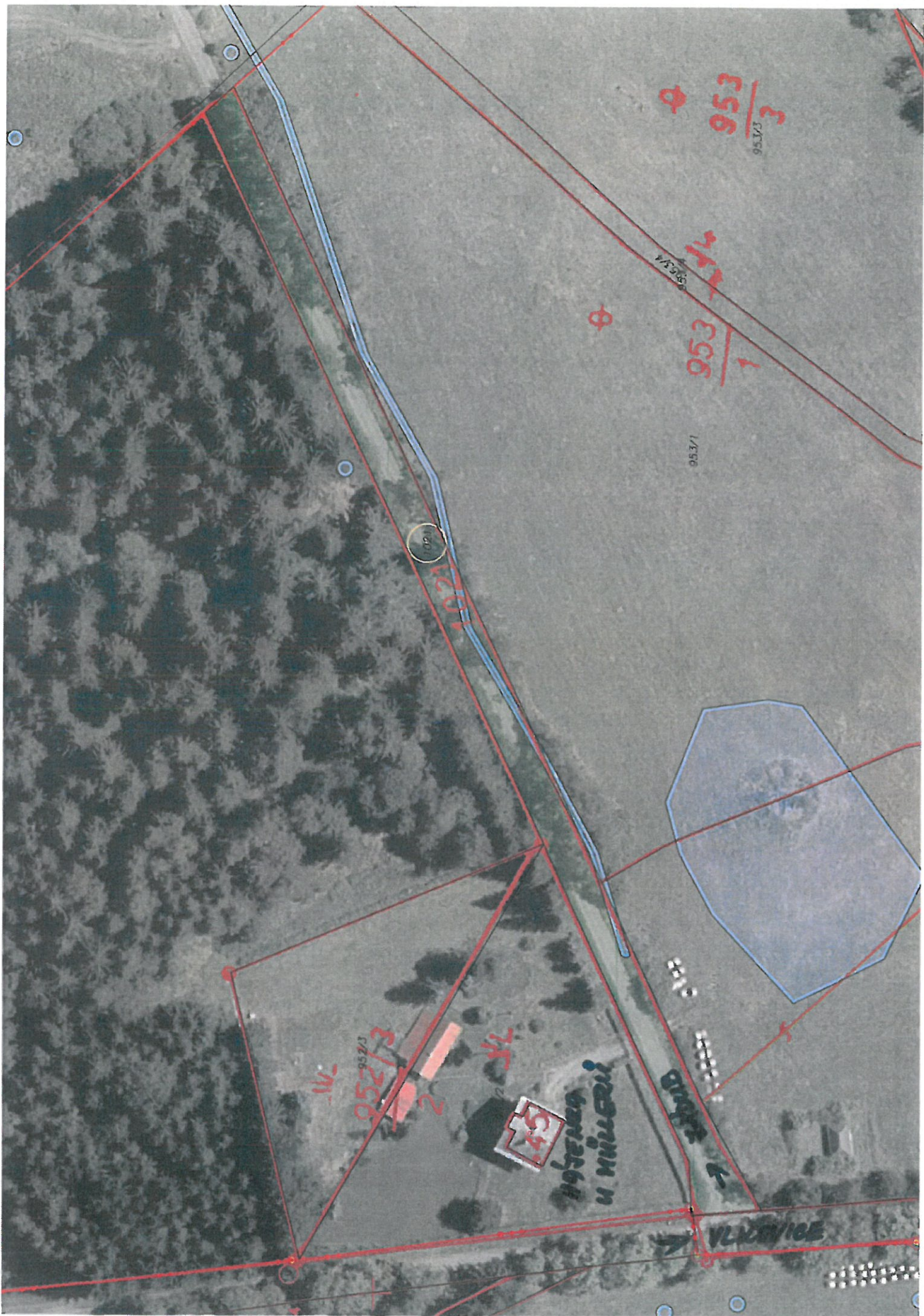




k.ú. Vlkovice u Mariánských Lázní

plocha BV

574 m²





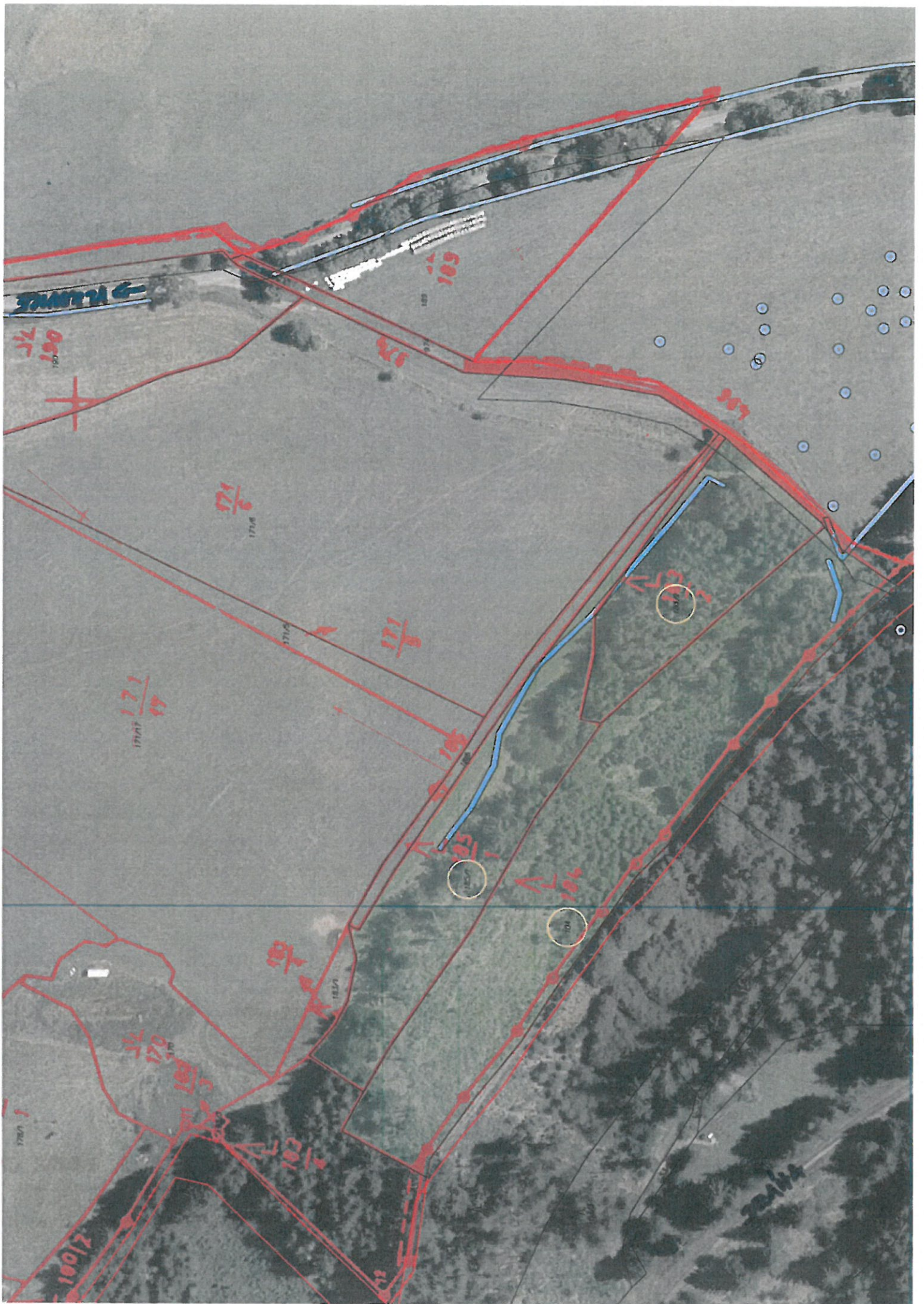
VIA DIRT

ML < STANOVISTE

350 M

10250

11



k.ú. Závěšín

plocha BV

444 m²



